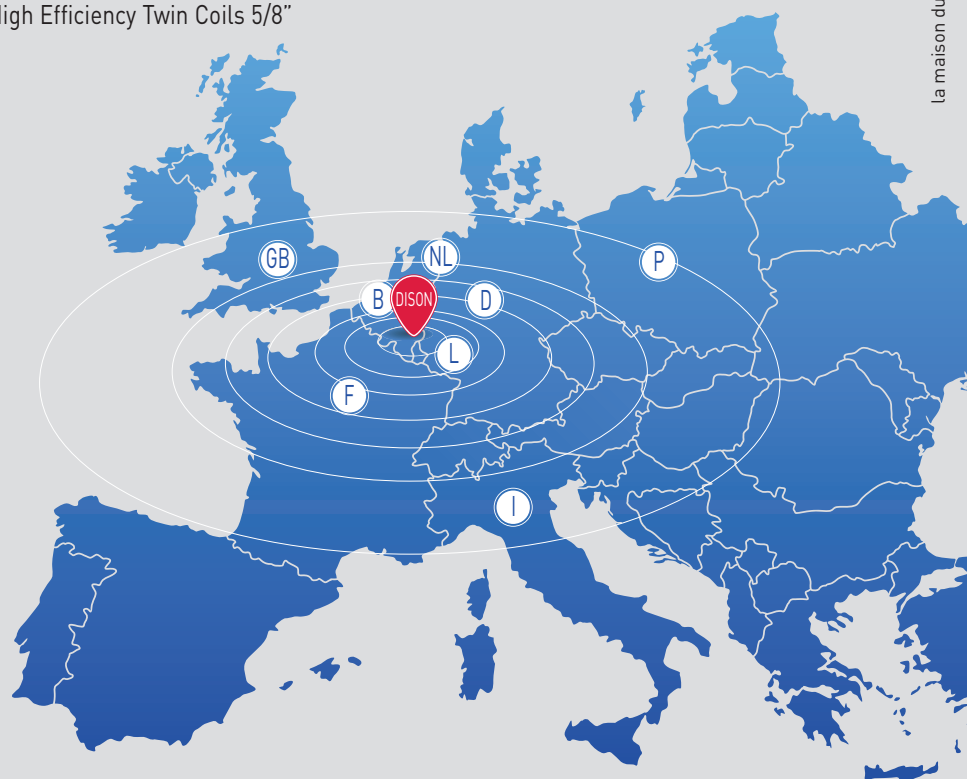
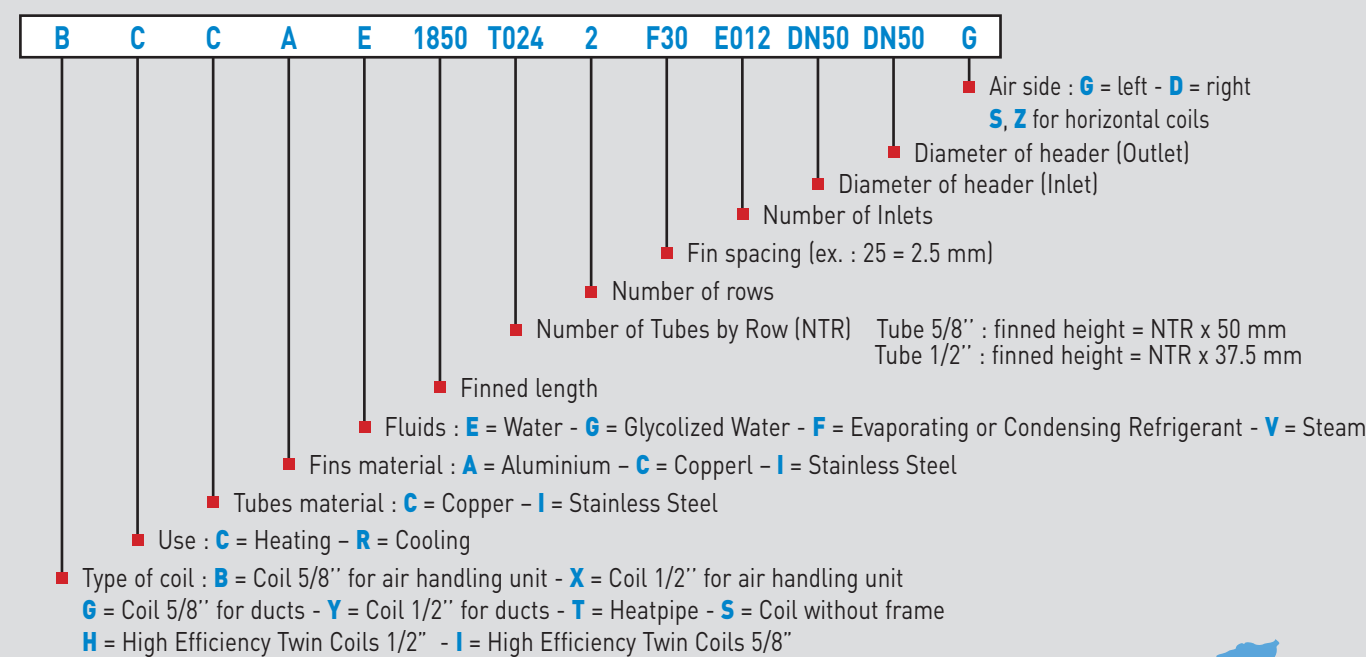


MANUFACTURING



EXPLANATION OF THE CODE



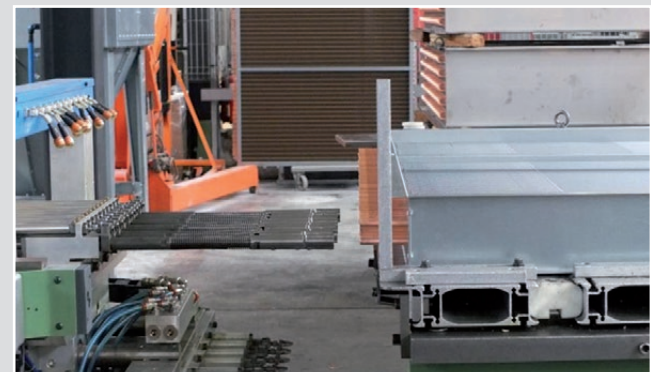
la maison du graphisme



HEAT EXCHANGER COPPER/ALUMINIUM



Archived product documentation since 1990



Efficient after-sale service

High performance production workshop



www.air-transfer.nl

GEOMETRY

PRODUCTS

TECHNICAL PROGRAM

Tubes 1/2"

FINS

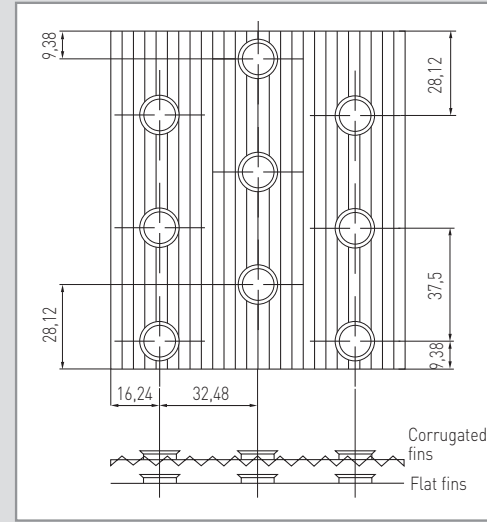
Fins type: corrugated or flat
Tube spacing: 37,5 x 32,48 mm

FIN THICKNESS

- 0,15 mm for fin spacing 1,8 to 4 mm
- 0,2 mm for fin spacing 2,1 to 4 mm
- 0,4 mm for fin spacing 3 to 6 mm
- 0,1 mm for fin spacing 1,8 to 3 mm (copper)

TUBES

Standard: copper Ø 12,7 (1/2") – thickness 0,35 mm



Tubes 5/8"

FINS

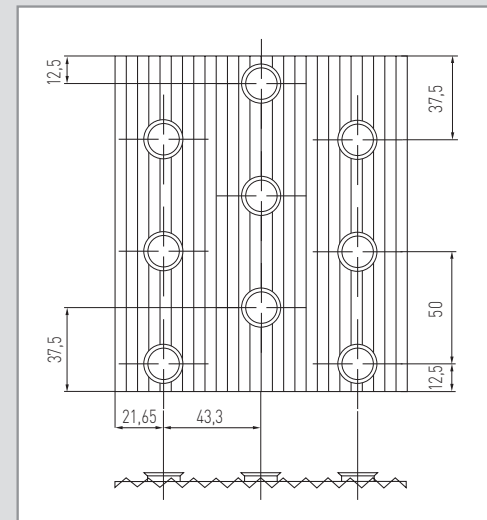
Fins type: corrugated
Tube spacing: 50 x 43,3 mm

FIN THICKNESS

- 0,2 mm for fin spacing 2,1 to 4 mm
- 0,4 mm for fin spacing 3 to 6 mm
- 0,1 mm for fin spacing 1,8 to 3 mm (copper)

TUBES

Standard: copper Ø 15,87 (5/8") – thickness 0,4 mm
Option: thickness: 0,75 and 0,89 mm



MATERIALS:

Frame: galvanized steel, stainless steel, aluminium

Header: steel, copper, stainless steel

Fins: copper, aluminium, coated fins, AlMg (only 1/2" and thickness 0,2 mm)

COPPER/COPPER



Evaporator/Condenser (also for heat pump)

COPPER/ALU PRECOATED

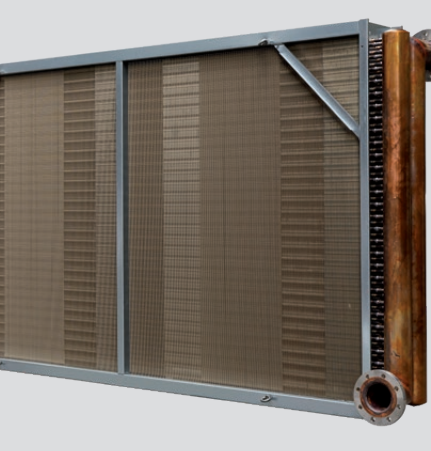
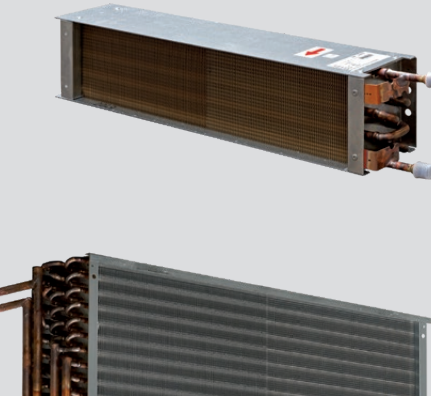
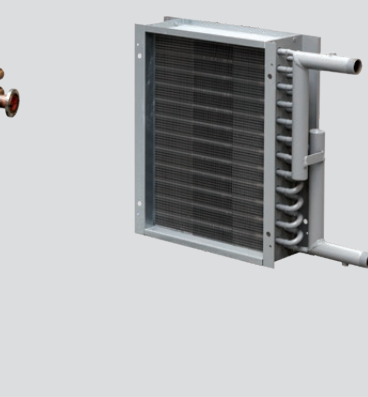
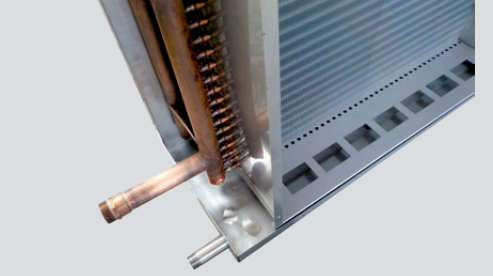
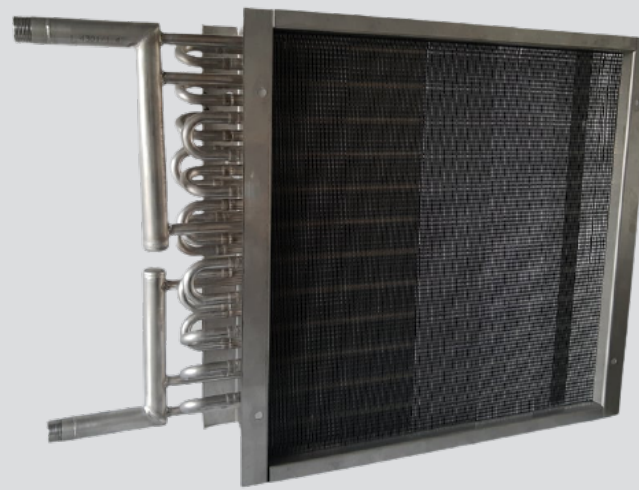


High efficiency Twin Coils (up to 80%)

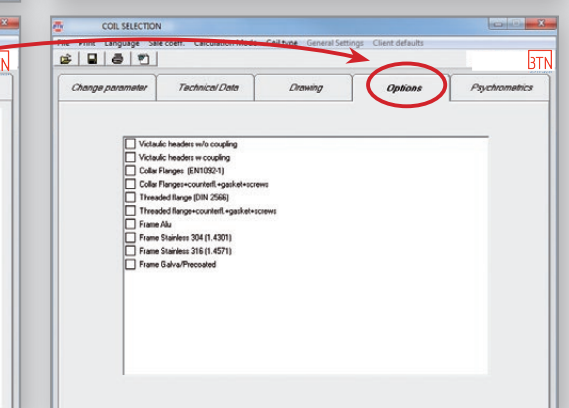
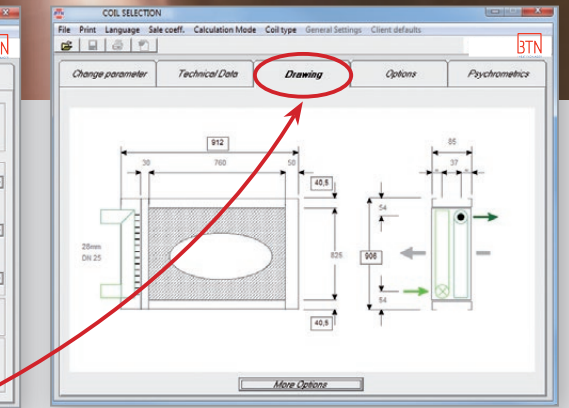
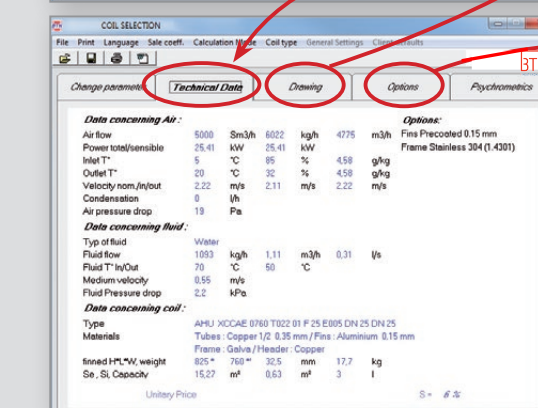
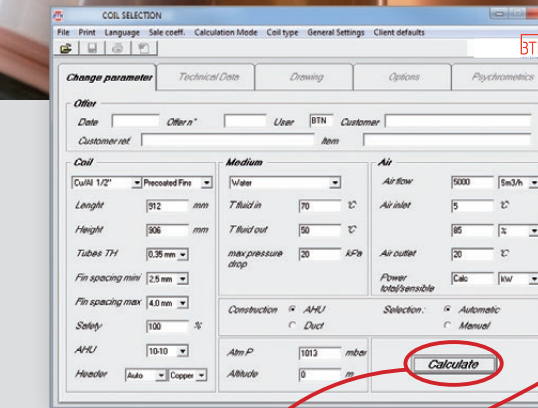
COPPER/ALUMINIUM with Heresite coating



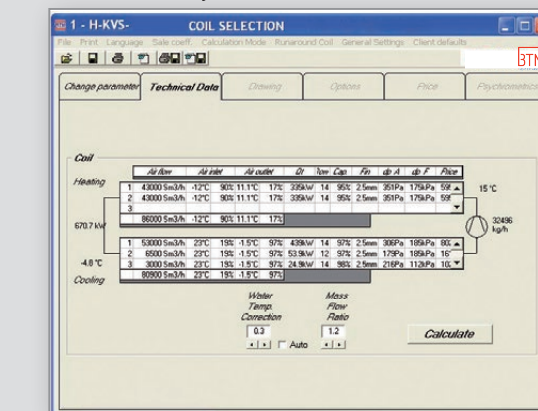
STAINLESS STEEL



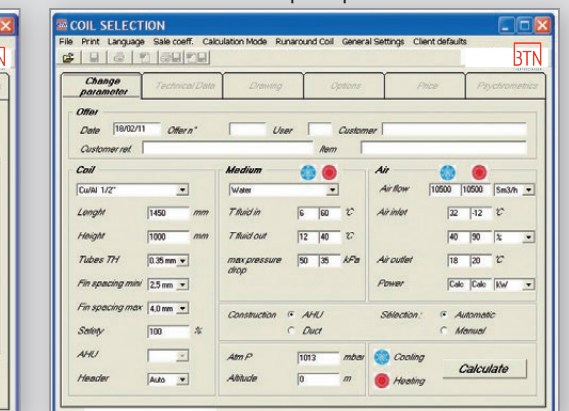
Standard Heat exchanger



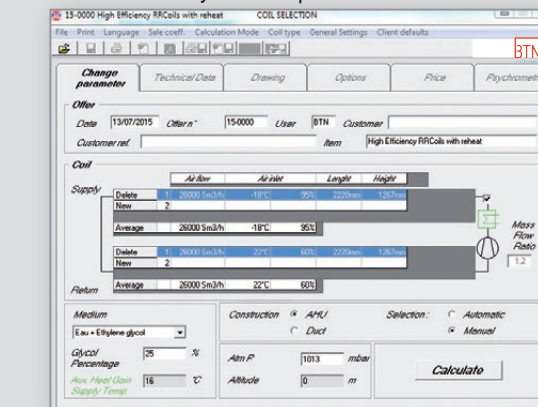
Heat recovery



Change-Over and Evaporator / Condenser for heat pump



Heat recovery with input



Heat pipe

